



Saint Mary's Hospital

St George Healthcare Group Adult Autism Services

St Mary's Hospital, Warrington are now accepting referrals for its new Adult Autism Inpatient Services for male and female patients with Autistic Spectrum Conditions (ASC).

Patients will have a primary diagnosis of an ASC with or with a dual diagnosis which may include Co-morbid conditions and/or a history of challenging behaviour. The service provides a safe and effective care programme using a person centred approach, with the aim of achieving fulfilling and rewarding lives.

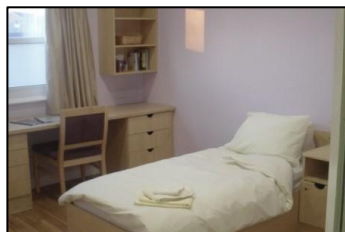
Leo Ward: is a 7 bedded locked male service

Hopkins Ward: is a 8 bedded locked female service

The gender specific wards are designed to offer a spacious, tranquil and caring locked environment, with the aim of optimising the patient's individual abilities. Staff work to enhance the development of social awareness, independent life skills, emotional management and help to promote community relationships, while assessing and managing risk.

Admission Criteria:

- Male and female patients over 18 years
- May require detention under the Mental Health Act (1983, amended 2007)
- Co-morbid Mental Illness
- Autistic Spectrum Conditions (ASC) Assessment of ASC including intellectual disability
- Aggressive and challenging behaviour
- Self harming and/or suicidal behaviour
- Breakdown in family support and existing support packages
- Forensic referrals will be reviewed and considered
- Transfer of patients from secure hospital



Autism Bill:

The Autism Act (2009) places a duty on statutory agencies to recognise the needs of people with Autism.

It states "In preparing an assessment of relevant needs, local authorities and partner Primary Care Trusts must have particular regard to the requirements for service and support of persons with Autism "

The specialist service provides:

- Specially trained staff
- Private en-suite rooms
- Spacious, air conditioned day areas
- Occupational therapy suite
- Highly equipped sensory room
- State of the art hydrotherapy service
- Rehabilitation kitchen
- IT suite
- Gym facilities
- Workshop and horticultural facilities
- Patient Cafe
- Outdoor garden and relaxation area
- Secure Vehicle for patient transport

St George Healthcare
GROUP

Promoting independence and safety:
maximising quality of life.





Assessment and Care Pathways:

Initial assessments are undertaken by a specialist multidisciplinary team, which forms the basis of the treatment plan and care pathway underpinned by assessment tools.

Interventions and treatments are supported by evidence based procedures which include:

- Pre admission and inpatient assessment
- Care planning and delivery of individual programmes
- Appropriate management and intervention plan using core TEACCH and SPELL principals
- Discharge and aftercare

Staff Team:

- Consultant Psychiatrist
- Clinical Psychologist
- Registered LD Nurse/RMNN
- Visiting RGN
- Specialist Occupational Therapist
- Speech and Language Therapist
- Physiotherapist
- Social Worker
- Rehabilitation Co-Therapists

Moving on Bespoke discharge packages

Focus on Care (FOC), Domiciliary and Nursing Agency is part of the St George Healthcare Group. In collaboration with the home teams, FOC can develop a bespoke care package for transition into the community

Service advisors:

Dr Tom Berney, MB ChB DPM FRCPsych FRCPCH

Honorary Consultant in Developmental Psychiatry, Associate Clinical Lecturer Newcastle University and Clinical Coordinator for The Brain Bank for Autism in Oxford

After training in Newcastle as a Child Psychiatrist, Dr Berney specialised in the Psychiatry of Learning Disability. For over 30 years, he was based at Prudhoe and Northgate Learning Disability Hospitals. Dr Berney's main clinical and research interest has been autism, providing a regional clinic and becoming a trainer in the ADI and ADOS diagnostic instruments. He became the consultant responsible for Northgate's specialist inpatient units for people with autism and learning disabilities which were innovative national services.

Dr Sue Parry, Clinical Psychologist has extensive experience in working with people with autistic spectrum conditions (ASC). Sue contributed to the consultation process for the "All Wales Autism Strategy". A concern of Sue's has always been the lack of specialist knowledge and services for people with ASC, she is keen to promote positive behavioural support in working with people with ASC as an in-depth understanding of ASC is crucial in helping to understand the communicative functions of each person's behaviour.

Sue utilises a wide number of psychological approaches that can be used to address individual emotional and behavioural issues that a person with ASC may present with:

- Social story work - can be a helpful medium to discuss issues
- Group work – can be offered to people if they have problems with social relationships, anxiety, anger and sexually inappropriate behaviour (where appropriate).

Zoya Zuvcenko, Educational Consultant & Trainer

Highlights the skills of those with autism through enabling them to recognise and utilise their positive qualities. Her doctoral study on adult learners and confidence, self-esteem and motivation expands this approach.

Zoya works at St. Mary's hospital, teaching life skills and is also involved with the British Association for Supported Employment and trains people for work whilst developing strategies with companies to help them obtain the best out of those with autism. Zoya believes that any ability, when sensitively and appropriately channelled, can be developed to realise potential.

Referral and enquiries to: info@stgeorgehealthcaregroup.co.uk

**St Mary's Hospital
Floyd Drive**

Warrington, WA2 8DB

Tel: +44 (0) 1925 423300

Fax: +44 (0) 1925 576752

www.stgeorgehealthcaregroup.co.uk